

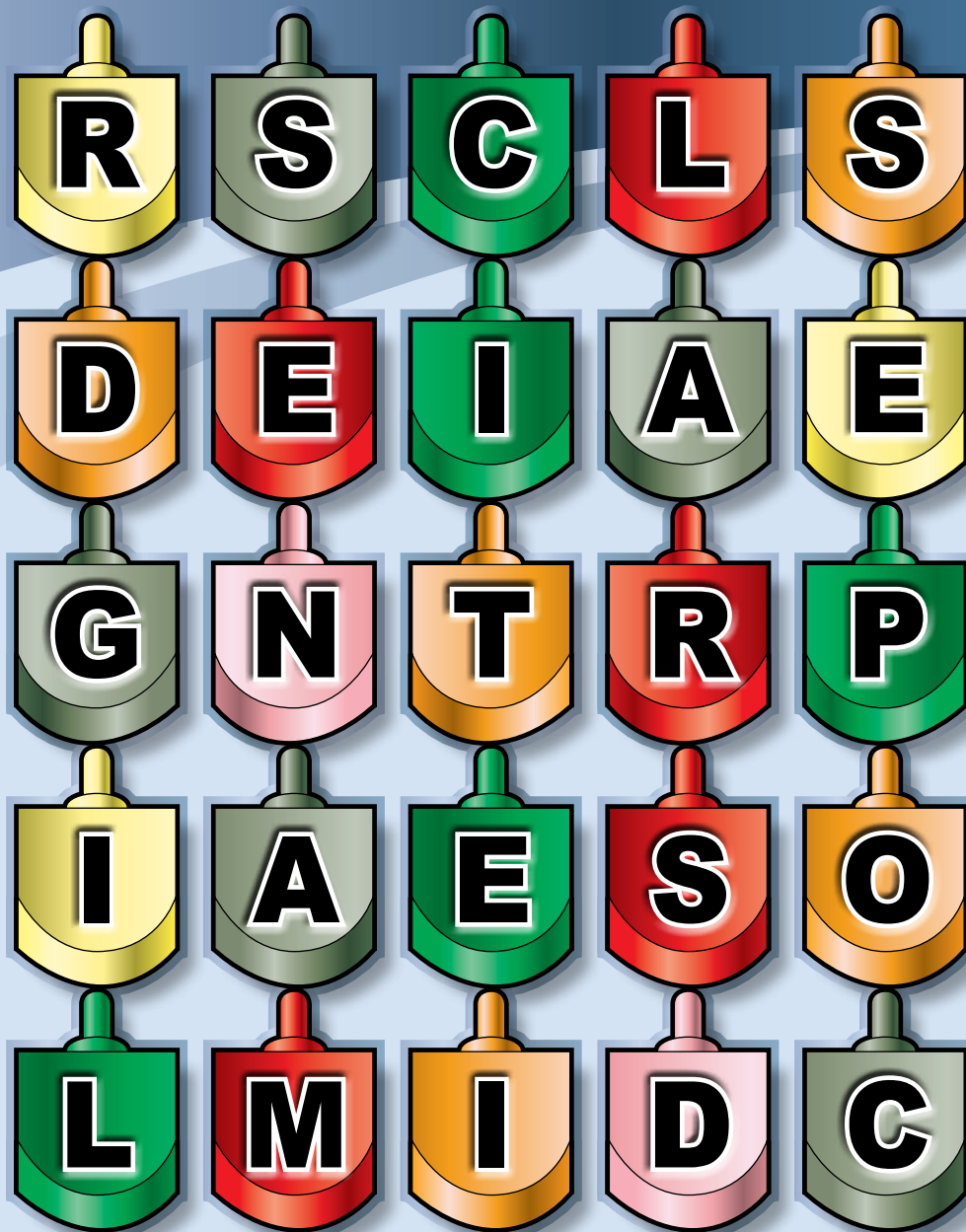
CELEBRATING *Chanukah*



COLOR THE MENORAH



DREIDEL WORDSEARCH



How to Play: Each player needs a pen or pencil and some paper. Find as many words as you can that have three letters or more and write them down. The letters must be connected either horizontally, vertically, or diagonally. After three minutes, all players put their pens/pencils down.

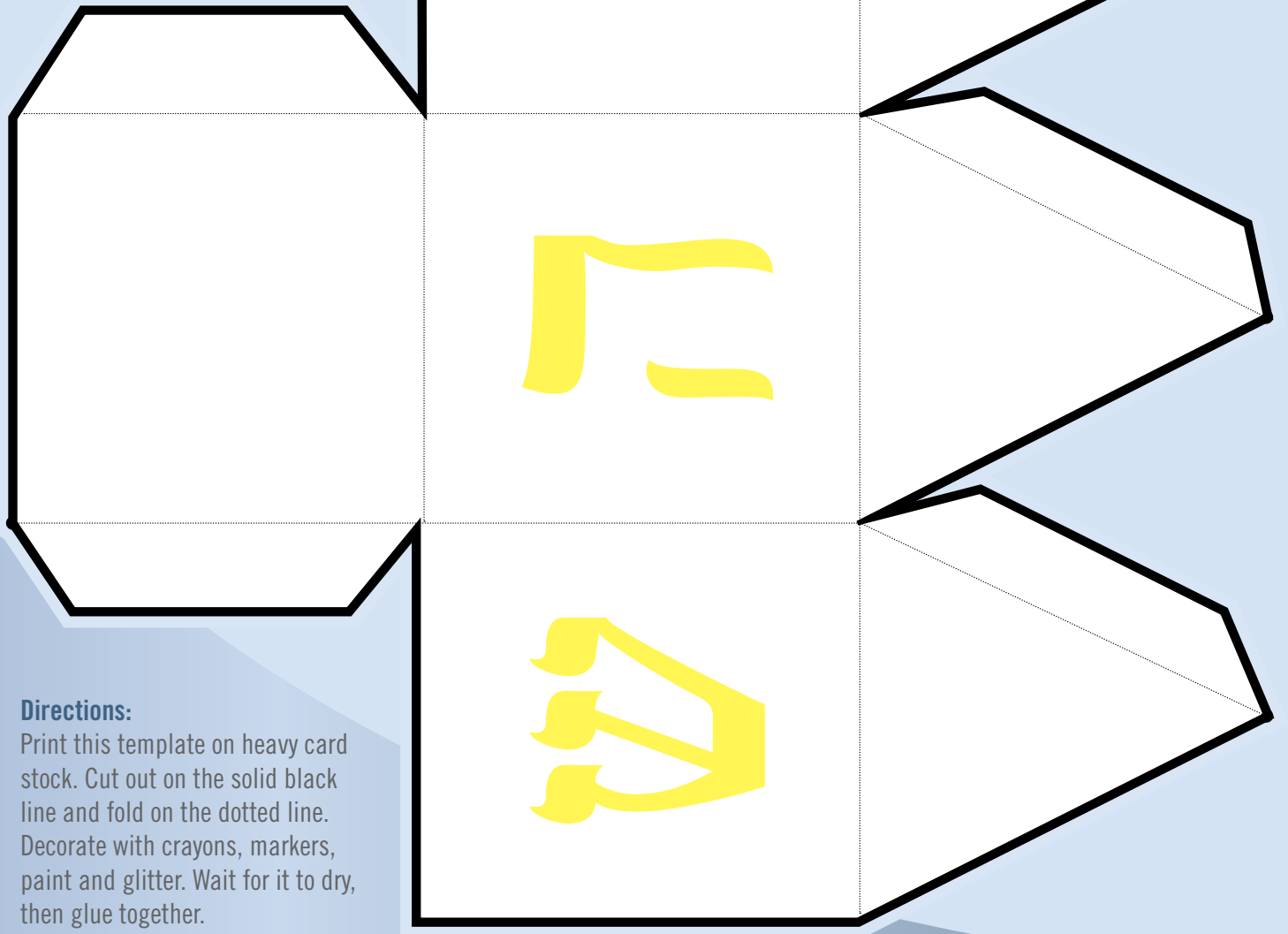
Scoring: Players take turns reading the words they wrote down. Players receive one point for each three letter word, two points for four letter words, three points for a five letter words, etc. Words less than three letters receive no points. The player with the most points wins.

Answer: You can make many words having 3 letters or more from the letters above. Here are a few:

- | | | | | |
|----------|----------|----------|----------|----------|
| air | lap | parties | rent | sling |
| ant | lapse | partner | rental | star |
| are | line | partners | rentals | stare |
| art | liner | parts | repaint | strain |
| arteries | lines | peal | repair | tale |
| ate | lingers | pealing | retail | tape |
| ear | nail | pear | retailer | tarp |
| ears | nets | pears | rise | tiles |
| eat | pail | rail | sails | tire |
| eaten | pails | rain | sale | tires |
| eating | paint | raise | sap | trail |
| eats | painter | rate | seal | trailers |
| entire | painters | real | seat | |
| era | paints | reap | senate | |
| gnats | pair | relate | sing | |

DREIDEL

MAKE YOUR OWN



Directions:

Print this template on heavy card stock. Cut out on the solid black line and fold on the dotted line. Decorate with crayons, markers, paint and glitter. Wait for it to dry, then glue together.

PLAYING THE GAME OF DREIDEL

Each player starts with some gelt (money, sweets or tokens). All players put one coin into the pot. Players take turns spinning the dreidel, following the instructions of the letter which lands facing up:

נ

(Nun) = Nisht (Nothing), play passes to next player.

ג

(Gimmel) = Gantz (all), the player takes all of the pot.

ה

(Heh) = Halb (Half), the player takes half of the pot.

ש

(Shin) = Shtel (put), the player puts all of his coins into the pot.

Play can go either for a set amount of rounds or until one player has won all of the coins.



CHANUKAH

MEGAMEMORY GAME

Make your own Chanukah memory match game by printing and coloring the cards. For best results, print on card stock.

Otherwise, print cards on regular paper then paste to construction paper. Cut on dotted lines to make 20 cards.

Goal: To collect the most pairs of cards.

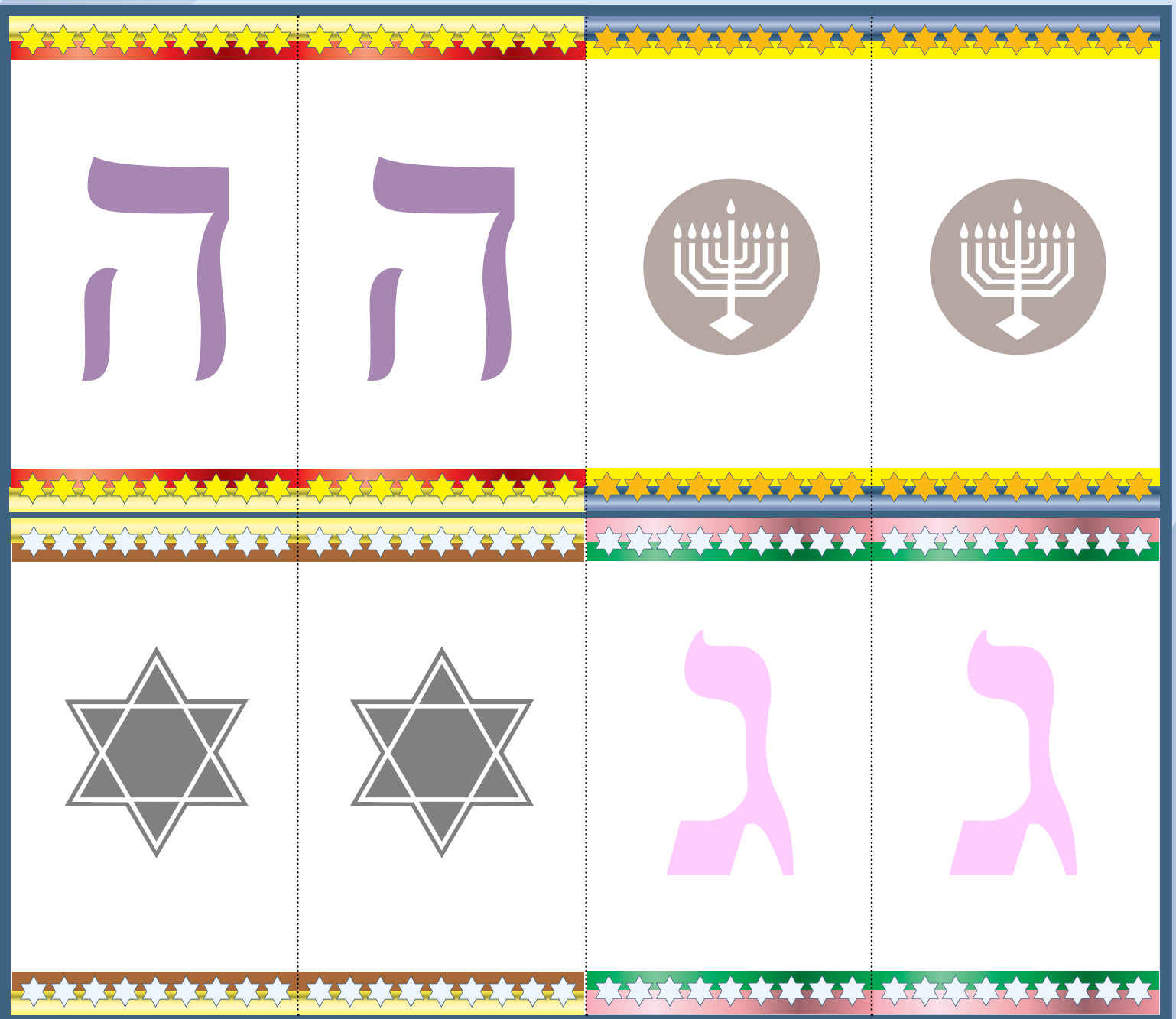
Setup: Shuffle the cards and lay them on the table, face down

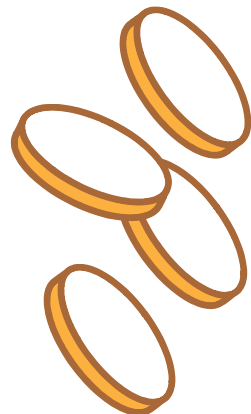
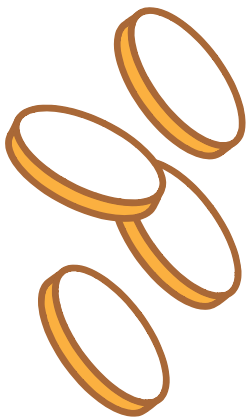
Gameplay: The youngest player goes first. Play then proceeds clockwise. On each turn, a player turns over two cards (one at a time) and keeps them if the images match.

If they successfully match two cards, that player gets to take another turn.

When a player turns over two cards that do not match, those cards are turned face down again and it becomes the next player's turn.

Winning: When all the pairs have been found, the player with the most cards wins.





CHANUKAH

VOCABULARY QUIZ

Draw a line connecting the word in the left column with its definition in the right column.

- | | | | |
|-----------|-----------------------|-----------------------|---|
| HAVDALAH | <input type="radio"/> | <input type="radio"/> | Potato pancakes traditionally eaten during Chanukah. The oil for cooking them reminds us of the miracle of holiday. |
| HALLEL | <input type="radio"/> | <input type="radio"/> | A four-sided spinning top, played with during Chanukah |
| GELT | <input type="radio"/> | <input type="radio"/> | The Jewish army that took control of parts of the Land of Israel and founded the Hasmonean dynasty. |
| KUGEL | <input type="radio"/> | <input type="radio"/> | Coins traditionally given to children on Chanukah. This word means <i>money</i> in Yiddish. |
| DREIDEL | <input type="radio"/> | <input type="radio"/> | A little can or container kept in the home, often in the kitchen, in which money to be donated to a charity is accumulated. |
| SHAMASH | <input type="radio"/> | <input type="radio"/> | A baked pudding of noodles or potatoes, eggs, and seasonings, traditionally eaten on the Sabbath. |
| LATKES | <input type="radio"/> | <input type="radio"/> | The third letter of the Hebrew alphabet. |
| GIMEL | <input type="radio"/> | <input type="radio"/> | The third month of the Jewish calendar, occurring from late November through early December. |
| PUSHKE | <input type="radio"/> | <input type="radio"/> | A chant of praise recited on Passover, Shavuoth, Sukkoth, Chanukah and Rosh Chodesh. |
| SHIN | <input type="radio"/> | <input type="radio"/> | A prayer said at the end of Shabbat. |
| KISLEV | <input type="radio"/> | <input type="radio"/> | The middle candle on the menorah which is used to light the other candles. |
| MACCABEES | <input type="radio"/> | <input type="radio"/> | The 21st letter of the Hebrew alphabet. |